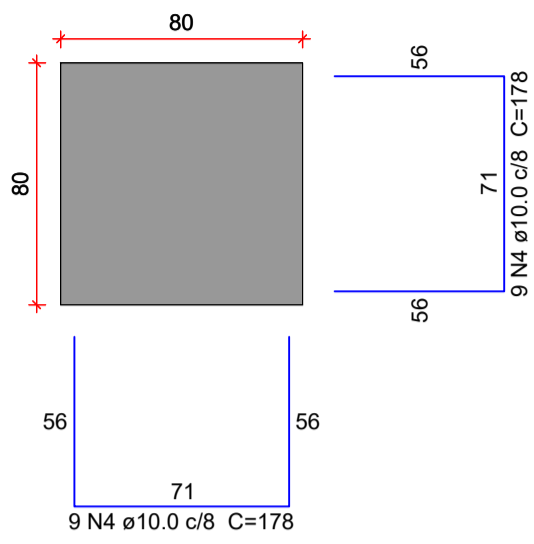


ARMAÇÃO SAPATAS - GARAGEM

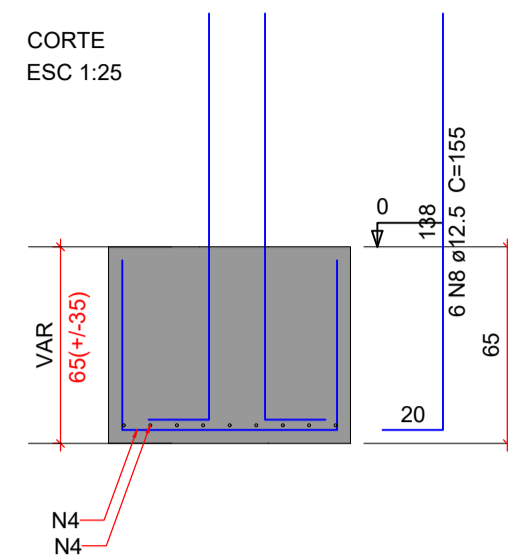
S2=S3=S4

PLANTA
ESC 1:25

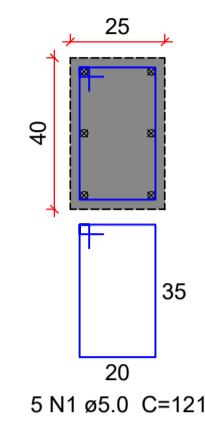


Solo com capacidade de suporte > 5.00 kgf/cm²
Solo compactado sobre a sapata
peso específico > 1800.00 kgf/m³

CORTE
ESC 1:25

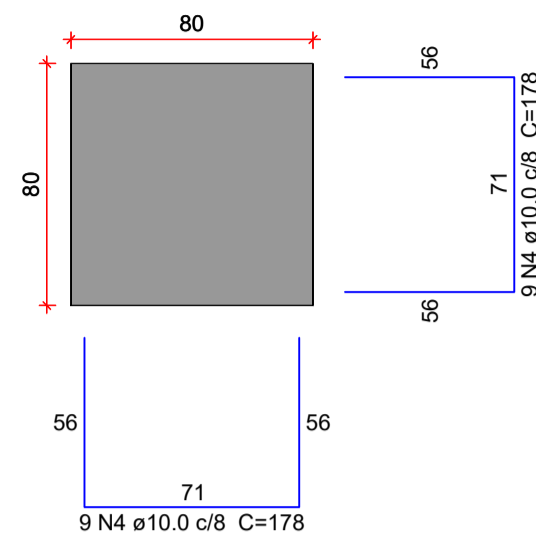


DETALHE DO PILAR
ESC 1:20



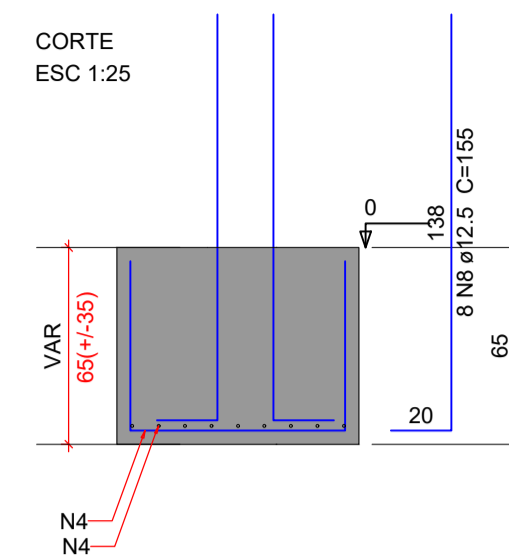
S6=S7=S8

PLANTA
ESC 1:25

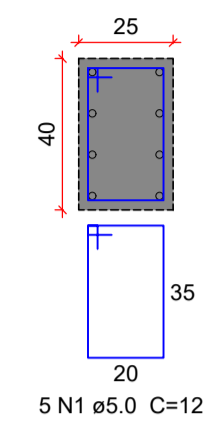


Solo com capacidade de suporte > 5.00 kgf/cm²
Solo compactado sobre a sapata
peso específico > 1800.00 kgf/m³

CORTE
ESC 1:25

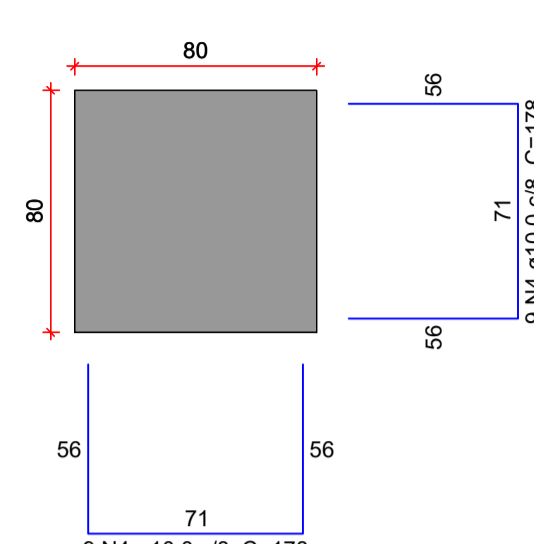


DETALHE DO PILAR
ESC 1:20



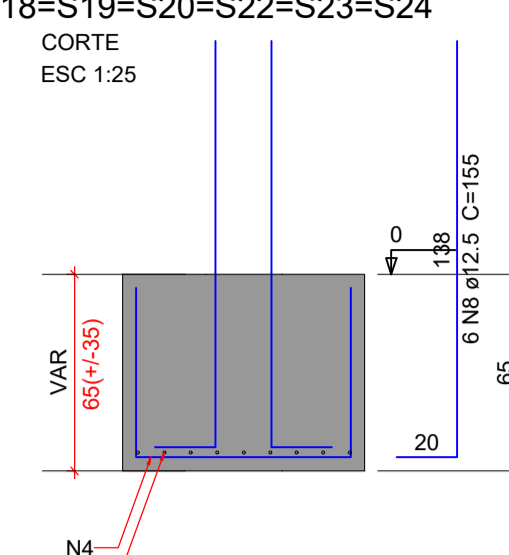
S10=S11=S12=S14=S15=S16=S18=S19=S20=S22=S23=S24

PLANTA
ESC 1:25

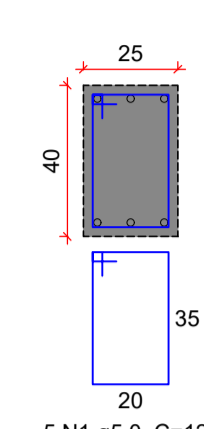


Solo com capacidade de suporte > 5.00 kgf/cm²
Solo compactado sobre a sapata
peso específico > 1800.00 kgf/m³

CORTE
ESC 1:25



DETALHE DO PILAR
ESC 1:20



Relação do aço

AÇO	N	DIAM (mm)	QUANT	C.UNIT (cm)	C.TOTAL (cm)
CA60	1	5.0	231	121	27951
	2	5.0	64	295	24780
	3	5.0	40	77	3080
CA50	4	10.0	900	178	160200
	5	10.0	378	177	66906
	6	10.0	126	146	18396
	7	10.0	378	89	33642
	8	12.5	132	155	20460
	9	12.5	144	153	22032
	10	12.5	48	153	7344

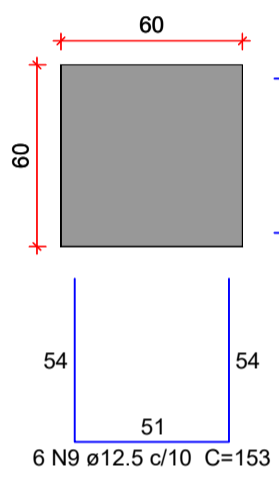
Resumo do aço

AÇO	DIAM (mm)	C.TOTAL (m)	PESO + 10% (kg)
CA50	10.0	2791.5	1893.1
CA60	5.0	498.4	528.1
PESO TOTAL (kg)			2421.2
CA50	2421.2		
CA60	94.6		

Volume de concreto (C-25) = 32.26 m³
Área de forma = 165.82 m²

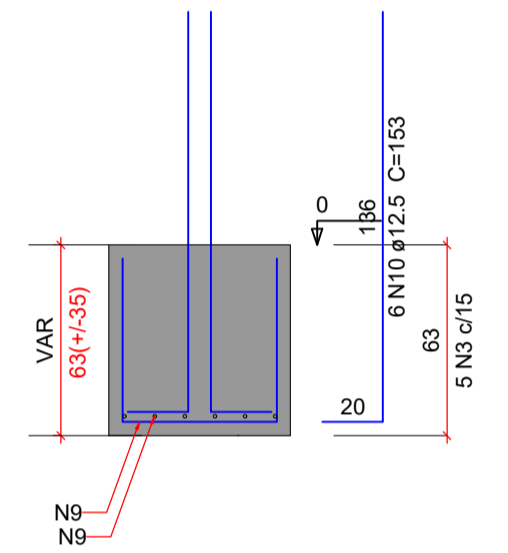
S81=S106=S115=S120=S128=S137=S143=S145

PLANTA
ESC 1:25

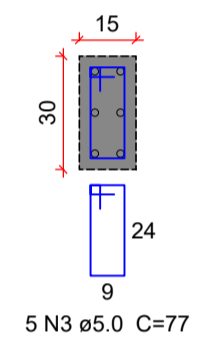


Solo com capacidade de suporte > 5.00 kgf/cm²
Solo compactado sobre a sapata
peso específico > 1800.00 kgf/m³

CORTE
ESC 1:25

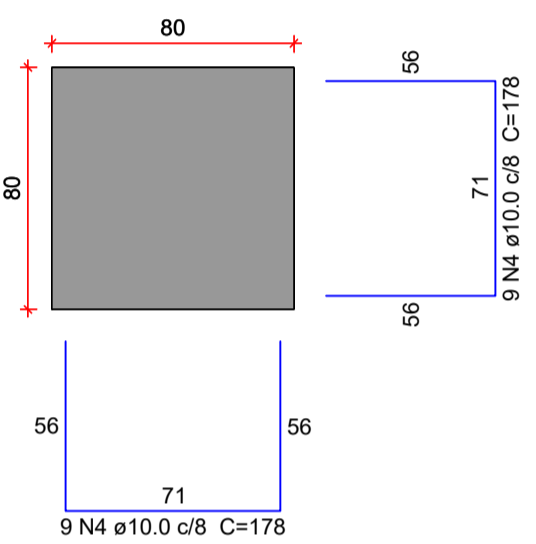


DETALHE DO PILAR
ESC 1:20



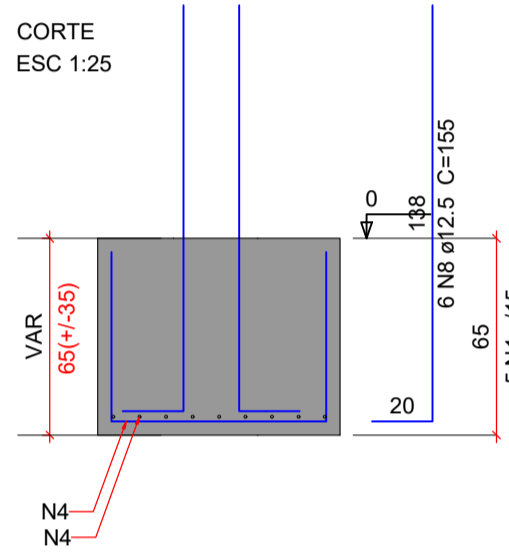
S42=S80=S103

PLANTA
ESC 1:25

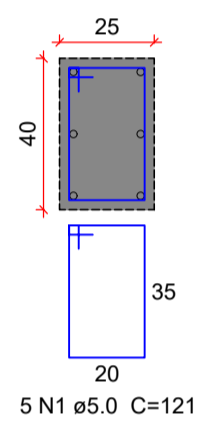


Solo com capacidade de suporte > 5.00 kgf/cm²
Solo compactado sobre a sapata
peso específico > 1800.00 kgf/m³

CORTE
ESC 1:25

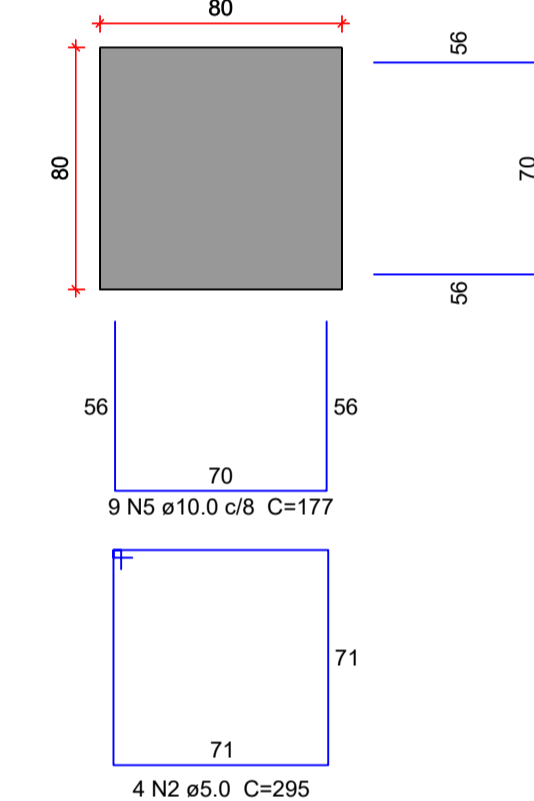


DETALHE DO PILAR
ESC 1:20



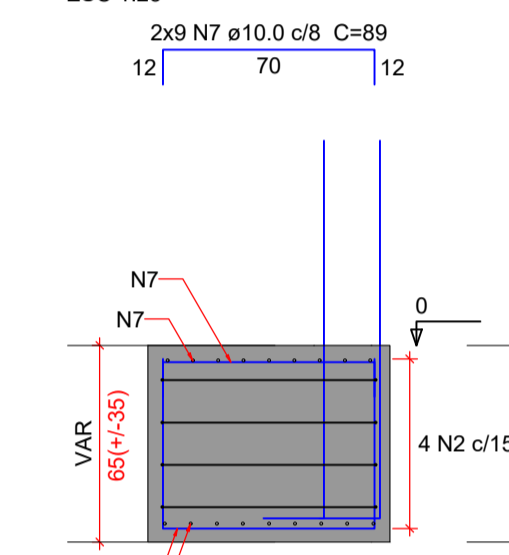
S113=S116=S122=S134=S142=S144=S153=S154=S155=S157=S158=S159=S162=S163=S164=S166=S167=S168=S171=S172=S173

PLANTA
ESC 1:25

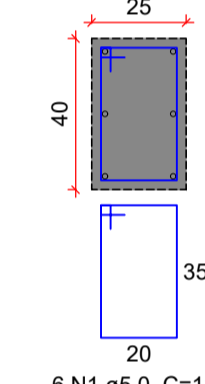


Solo com capacidade de suporte > 5.00 kgf/cm²
Solo compactado sobre a sapata
peso específico > 1800.00 kgf/m³

CORTE
ESC 1:25

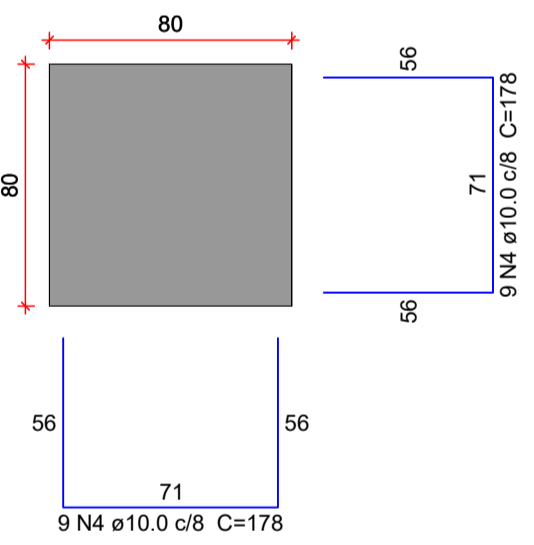


DETALHE DO PILAR
ESC 1:20



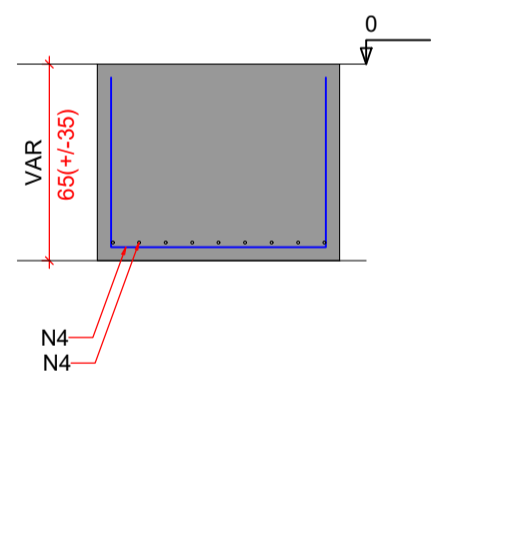
S171=S172=S173=S174=S175=S176=S177=S178=S179=S180=S181=S182=S183=S184=S185=S186=S187=S188=S189=S190=S192=S193=S195=S196=S198=S199=S201=S202=S203

PLANTA
ESC 1:25



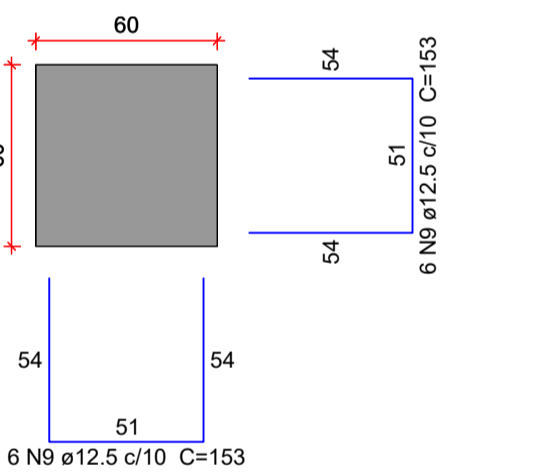
Solo com capacidade de suporte > 5.00 kgf/cm²
Solo compactado sobre a sapata
peso específico > 1800.00 kgf/m³

CORTE
ESC 1:25



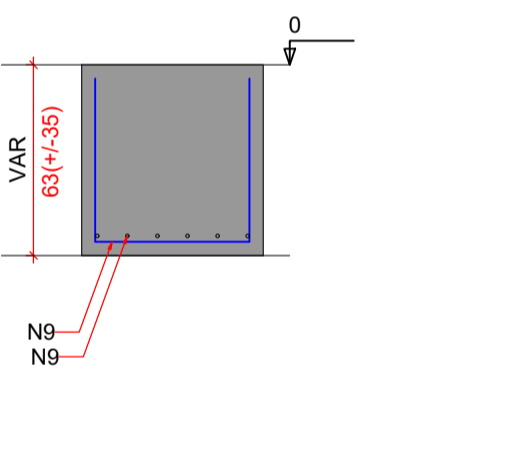
S191=S194=S197=S200

PLANTA
ESC 1:25



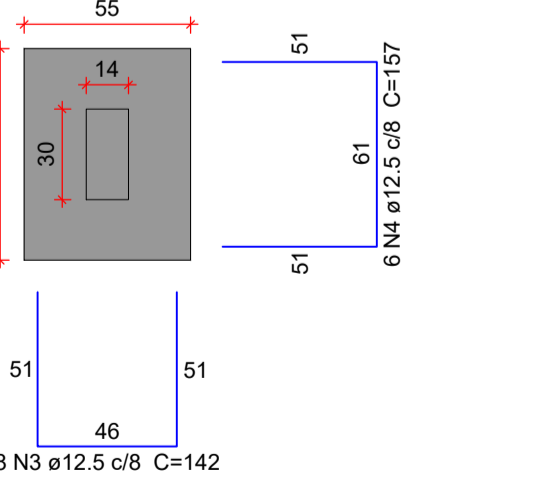
Solo com capacidade de suporte > 5.00 kgf/cm²
Solo compactado sobre a sapata
peso específico > 1800.00 kgf/m³

CORTE
ESC 1:25



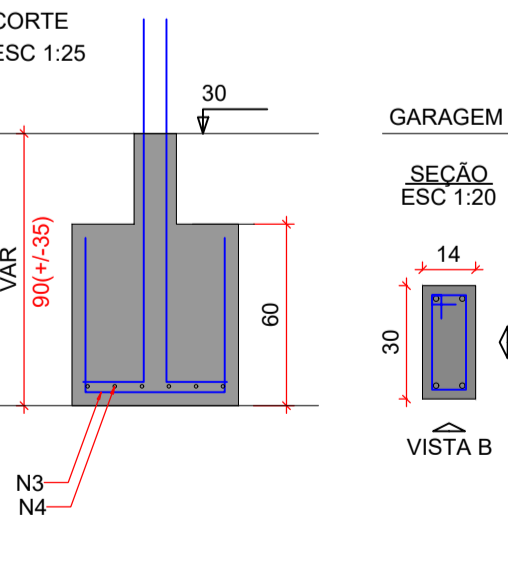
S124=S125

PLANTA
ESC 1:25



Solo com capacidade de suporte > 5.00 kgf/cm²
Solo compactado sobre a sapata
peso específico > 1800.00 kgf/m³

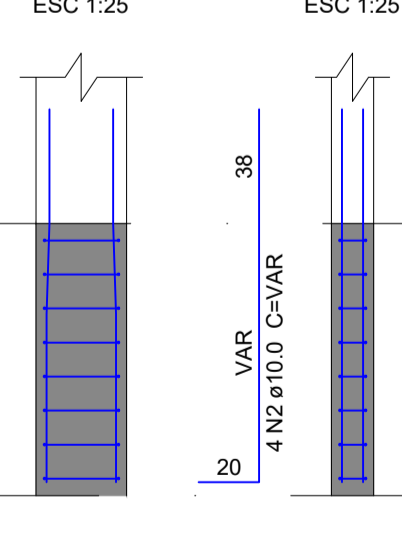
CORTE
ESC 1:25



P124=P125

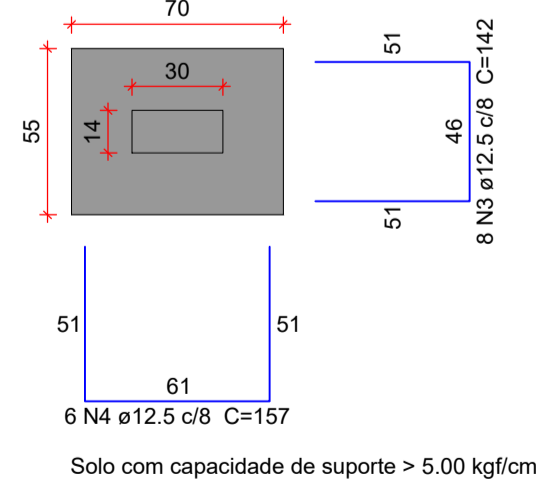
VISTA H
ESC 1:25

VISTA B
ESC 1:25



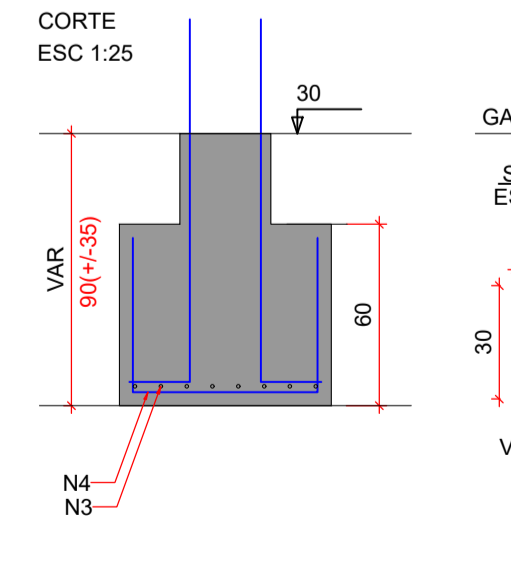
S104=S117

PLANTA
ESC 1:25



Solo com capacidade de suporte > 5.00 kgf/cm²
Solo compactado sobre a sapata
peso específico > 1800.00 kgf/m³

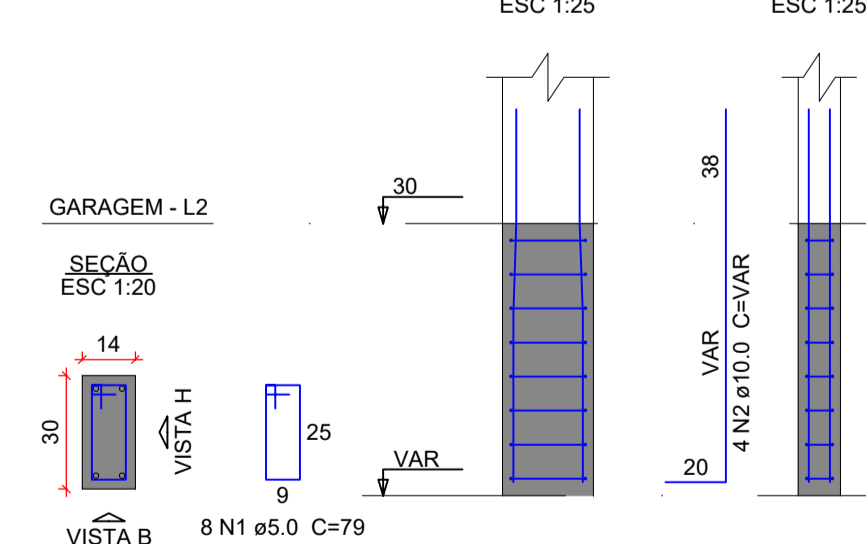
CORTE
ESC 1:25



P104=P117

VISTA H
ESC 1:25

VISTA B
ESC 1:25



Relação do aço

AÇO	N	DIAM (mm)	QUANT	C.UNIT (cm)	C.TOTAL (cm)
CA60	1	5.0	32	79	2528
	2	10.0	16	VAR	VAR
	3	12.5	32	142	4544
CA50	4	12.5	24	157	3788

Resumo do aço

AÇO	DIAM (mm)	C.TOTAL (m)	PESO + 10% (kg)
CA50	10.0	22.8	15.4
CA60	5.0	83.2	88.1
CA60	12.5	25.3	4.3
PESO TOTAL (kg)			103.5
CA50	103.5		
CA60	4.3		

Volume de concreto (C-25) = 0.97 m³
Área de forma = 7.06 m²

ORGÃOS PÚBLICOS

PROJETO ESTRUTURAL

TIPO DE EMPREENDIMENTO

PÚBLICO

DATA

JUN/2026

CONTEÚDO

ARMAÇÃO DAS SAPATAS

PRANCHA

07/18



PREFEITURA DO MUNICÍPIO DE MERCEDES

DEPARTAMENTO DE ENGENHARIA

RUA DR. OSVALDO CRUZ, 555 CEP 85998-000 MERCEDES-PR FONE: (45) 3256-8045

PROJETO:

ENG. CIVIL CRISTIAN COMIN
CREA: PR-2145677/D

EXECUÇÃO:

PROPRIETÁRIO:

MUNICÍPIO DE MERCEDES
CNPJ: 95.719.373/0001-23

OBRA: FECHAMENTO DE BARRAÇÃO PRÉ-MOLDADO

LOCAL: AV. DR. MÁRIO TOTTA / LOTE Nº 18 / QUADRA Nº 03 / LOT. ZANCANELLA / MERCEDES - PR
PROPRIETÁRIO: MUNICÍPIO DE MERCEDES